

2011 TLMI Label Awards

INTERNATIONAL AWARDS



Digital Printing— Wine & Spirits (Beer)

FIRST PLACE

GERMARK, S.A.
Anfitatro



Flexography— Color Process—Prime

FIRST PLACE

COLLOTYPE LABELS INTL.
HOLDINGS PTY LTD
*Genesis Premium
Apple Cider*



Flexography— Line/Non-Prime

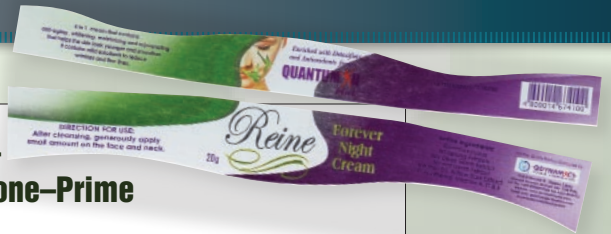
**FIRST PLACE/
INNOVATOR AWARD**

SCHREINER GROUP
GMBH & CO. KG
Needle Trap

Multi-Process— Line & Screen/Tone—Prime

FIRST PLACE

KIMBELLS PACK INC.
*Reine Forever Night
Cream*



Multi-Process— Line—Prime

FIRST PLACE

PILOT ITALIA S.P.A.
*Grappa Luigi Francoli
12th Anniversario*



Offset—Line & Screen/Tone—Prime

FIRST PLACE

PILOT ITALIA S.P.A.
Idratante Neuro Roberts



Gravure—Line & Screen/Tone—Prime

FIRST PLACE

NOVELPRINT SISTEMAS
DE ETIQUETAGEM
Balada 51 Ice



Paperboard/Rigid Packaging

FIRST PLACE

SCHREINER GROUP
GMBH & CO. KG
Safety Bag

2011 TLMI Label Awards



**Tags—
Merchandising
FIRST PLACE**

KIMBELLS PACK INC.
Skintel Anti-Age White



**Tags—
Industrial
and/or Systems
FIRST PLACE**

SCHREINER GROUP
GMBH & CO. KG
(rfid) - Flag Tag

Take Your Die Cutting To... X-TREMES[®]

TLMI
TAG AND LABEL
EXHIBITION
SCOTTSDALE, ARIZONA - OCT 18-19

BUNTING Magnetics Co.
800.328.0000 (t) 480.364.0000 (f) www.buntingmagnetics.com
www.buntingmagnetics.com



**Wine & Spirits—
Flexography/
Letterpress—Line/Prime
FIRST PLACE**

LABELGRAPHICS
(GLASGOW) LTD
Tamova Vodka



**Wine & Spirits—
Flexography/
Letterpress—Line &
Screen/Tone—Prime
FIRST PLACE**

LABELGRAPHICS
(GLASGOW) LTD.
*Dewar's 18 Years Old Double
Aged Blended Scotch Whisky*

2011 TLMI Label Awards

Wine & Spirits—Offset— Color Process—Prime **FIRST PLACE**

COLLOTYPE LABELS INTL.
HOLDINGS PTY. LTD.
Box Head



Wine & Spirits— Offset—Line/Prime **FIRST PLACE**

COLLOTYPE LABELS INTL.
HOLDINGS PTY. LTD.
Chandon Cuvée Riche

SECOND PLACE

COLLOTYPE LABELS INTL.
HOLDINGS PTY. LTD.
Bremerton

acpo Ltd. 877-412-TAPE (8273) 419-898-4243

Thermal Transfer Printable Matte Overlaminates Added to Impressive Self-Wound Product Line

<p>General Use</p> <p>505T Polypropylene 1.3 Mil</p>	<p>Low Glare</p> <p>531T Polypropylene 1.5 Mil</p>
<p>High Durability</p> <p>600T Polypropylene 1.42 Mil UL 602T Polypropylene 1.42 Mil UL</p>	<p>Low Glare Durable</p> <p>631T Polypropylene 1.42 Mil</p>

Overlaminates Benefits For Your Thermal Transfer Applications:

- Offers Excellent Thermal Transfer Printability
- Reduces Cost and Waste Using Linerless Material
- Exhibits Excellent Abrasion, Chemical and Oil Resistance

Also Introducing Overlaminates Approved For

Thermal Transfer **VIDEOJET.** **Hot Stamp**
Uptime Peace of Mind™

APPROVED Thermal Transfer Ribbon Recommendations & Chemical Resistance Chart Available At www.acpo.com



Wine & Spirits—Offset— Line & Screen/ Tone—Prime **FIRST PLACE**

COLLOTYPE LABELS INTL.
HOLDINGS PTY. LTD.
Thistle Hill

SECOND PLACE

COLLOTYPE LABELS INTL.
HOLDINGS PTY. LTD.
Nautilus

2011 TLMI Label Awards

NORTH AMERICAN AWARDS

Coupon FIRST PLACE

WHITLAM LABEL COMPANY
Walmart Gift Card
Answer Printing



Digital Printing— Food & Beverage Products

FIRST PLACE

DIGITAL LABEL SOLUTIONS, INC.
Arrowhead Syrup & Sales -
Devil's Island Liquid Energy

WHY STOP AT ALL?



STOPPING YOUR PRESS IN THE
MIDDLE OF A RUN WASTES MONEY...
GET IT BACK WITH A MARTIN

With more than 8000 successful web-based sales and automatic splicing installations worldwide, our 42 years of experience is second to none.

Martin technology has simply designed-in to ensure that it performs efficiently and reliably in today's global working environment where continuous operation is taken for granted.

With the ongoing rise in raw material costs, the need for sustainability becomes primary.

- Improve substrate usage by reducing waste
- Improve press uptime with automatic roll changes
- Improve print quality with constant printing speed
- Improve output per shift with fewer stoppages
- Improve your bottom line with better machine utilization

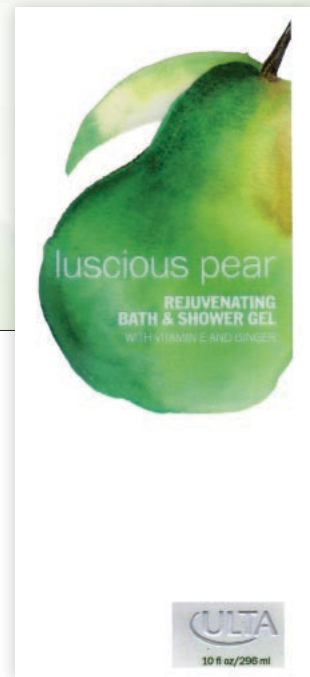


Martin Automatic Inc

High Performance Splicing, Rewinding and Tension Control Systems

www.martinautomatic.com

OUR EXPERIENCE...YOUR ADVANTAGE



Digital Printing— Health & Beauty Products

FIRST PLACE

I.D. IMAGES
Ultra Bath & Shower Gel

2011 TLMI Label Awards



Digital Printing— Wine & Spirits (Beer)

FIRST PLACE

COLLOTYPE LABELS USA INC.
Baileys Mudslide

SECOND PLACE

COLLOTYPE LABELS USA INC.
Santa Barbara Collection

Flexography— Color Process—Prime

FIRST PLACE

BELMARK, INC.
Freschetta Pizza Label



SECOND PLACE

MCDOWELL LABEL & SCREEN PRINTING
Sadler's Smokehouse Sliced Beef Brisket

Flexography— Line/Non-Prime

FIRST PLACE

TAILORED LABEL PRODUCTS, INC.
Craftsman® Flexo Label



Digital Printing— All Other

FIRST PLACE

RR DONNELLEY CO.
Gathering Leaves



Flexography—Color Process—Non-Prime

SECOND PLACE

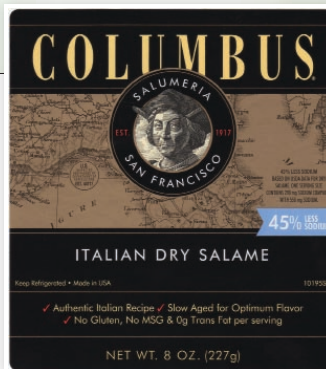
DRG TECHNOLOGIES
Team REALTREE



EDP Label

FIRST PLACE

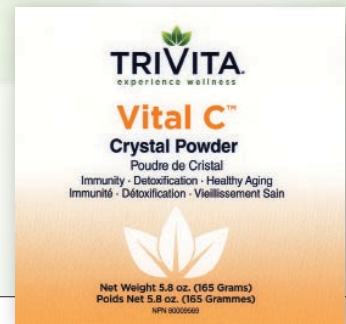
AMHERST LABEL, INC.
Heavenly Peace



Flexography—Line/Prime

FIRST PLACE

MPI LABEL SYSTEMS
OF CALIFORNIA
Salumeria - Columbus



Flexography—Line & Screen/Tone—Prime

FIRST PLACE

MCDOWELL LABEL &
SCREEN PRINTING
Vital C

SECOND PLACE

MCDOWELL LABEL &
SCREEN PRINTING
Classic Scent Lotion

2011 TLMI Label Awards



Flexography— Line & Screen/Tone— Non-Prime

FIRST PLACE

MCDOWELL LABEL &
SCREEN PRINTING
CVS Clear Zinc



Gravure— Line/Non-Prime

FIRST PLACE

MULTI-COLOR CORPORATION
Colt 45 Neck Label

SECOND PLACE

MULTI-COLOR CORPORATION
*Leinenkugel's Limited
Neck Label*



Multi-Process— Line/Prime

FIRST PLACE

MCDOWELL LABEL &
SCREEN PRINTING
HCG Elite

SECOND PLACE

NATIONAL LABEL COMPANY
Lubriderm Lotion



Gravure— Color Process—Prime

FIRST PLACE

MULTI-COLOR CORPORATION
*Palmolive Caprice Especiali-
dades Spray Professionals*

SECOND PLACE

MULTI-COLOR CORPORATION
Bick's Sweet Green Relish



Gravure—Line & Screen/Tone—Non-Prime

FIRST PLACE

MULTI-COLOR CORPORATION
*Blue Moon - Pale Moon
Neck Label*



Multi-Process— Line/Non-Prime

FIRST PLACE

MULTI-COLOR CORPORATION
*L'Oréal Studio Line
Overworked Hair Putty*

Multi-Process—Color Process—Prime

FIRST PLACE

MCDOWELL LABEL &
SCREEN PRINTING
Lichi Super Fruit

SECOND PLACE

MCDOWELL LABEL &
SCREEN PRINTING
Affection





**Multi-Process—
Line & Screen/Tone—
Prime**

FIRST PLACE

MCDOWELL LABEL &
SCREEN PRINTING
M5 Extreme

SECOND PLACE

ENVISION LABEL INC.
*Dymatize XPAND XTREME
PUMP (orange)*



**Multi-Process—
Line & Screen/Tone—
Non-Prime**

FIRST PLACE

NATIONAL LABEL COMPANY
Clear 2-Ply Label

**Non-Pressure Sensitive—
All Processes/Cut & Stack—
Color Process—Prime**

FIRST PLACE

STANDARD REGISTER CORP.
Silgan EZ Feed

SECOND PLACE

MPI LABEL SYSTEMS OF CALIFORNIA
Beyonce



*It's the ultimate in workflow acceleration,
driving higher margins and slashing
waste. Short run flexo now makes sense.
It's efficient. It's profitable.*

Go to markandy.com/secondscount

MARKANDY

www.markandy.com



2011 TLMI Label Awards



**Non-Pressure Sensitive—
All Processes/Cut &
Stack—Line/Prime**
FIRST PLACE

STANDARD REGISTER CORP.
Ames True Temper

**Offset—
Color Process—Non-Prime**
FIRST PLACE

MULTI-COLOR CORPORATION
Zerex Extended Life Back Label



Promotional
FIRST PLACE

LABEL IMPRESSIONS, INC.
Fuji Food Static Cling

SECOND PLACE

RR DONNELLEY CO.
*CARFAX Window
Decal/Postcard*



**Non-Pressure Sensitive—
All Processes/Cut &
Stack—Line & Screen/
Tone—Prime**
FIRST PLACE

MULTI-COLOR CORPORATION
Wisk High Efficiency

SECOND PLACE

MULTI-COLOR CORPORATION
*Castrol SYNTEC
Gear Oil 75W-90*



**Roll to Roll—
Color Process—Prime**
FIRST PLACE

MCDOWELL LABEL &
SCREEN PRINTING
Sexification

SECOND PLACE

LABEL TECHNOLOGY, INC.
*Sprout Organic
Baby Food Pouch*



**Offset—
Color Process—Prime**
FIRST PLACE

MULTI-COLOR CORPORATION
Downy with Silk Touch

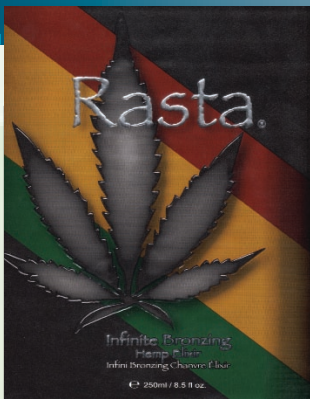


Roll to Roll—Line/Prime
FIRST PLACE

MCDOWELL LABEL &
SCREEN PRINTING
Playboy Bronze Couture

SECOND PLACE

MCDOWELL LABEL &
SCREEN PRINTING
Pure Glam



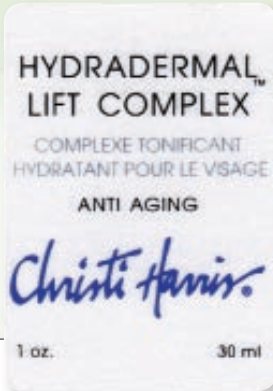
**Roll to Roll—
Line & Screen/
Tone—Prime**
FIRST PLACE

MCDOWELL LABEL &
SCREEN PRINTING
Rasta



**Rotary Screen Printing—
Line/Non-Prime**
FIRST PLACE

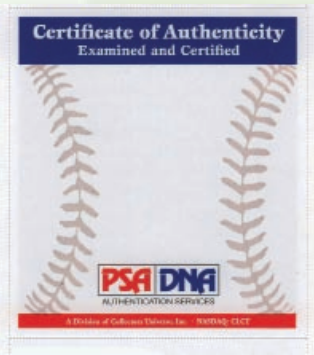
DRG TECHNOLOGIES
Hoover Triple Air



**Rotary Screen Printing—
Line/Prime**

FIRST PLACE

MCDOWELL LABEL &
SCREEN PRINTING
Hydradermal



**Tags—
Industrial and/or Systems**

FIRST PLACE

BONHAM LABEL LLC
PSA/DNA

SECOND PLACE

MCDOWELL LABEL &
SCREEN PRINTING
Made in the USA

ACTEGA WIT
Inks • Coatings • Adhesives

We Provide Solutions...



Inks, Coatings and Adhesives for:

- Shrink Sleeve
- Low Migration / Low Extractable
- Extended Content
- Wine Labels
- Renewable Resource
- Variable Data Imaging

For Your Opportunities.

ACTEGA WIT provides technical application solutions for all your ink, coating and adhesive needs. Using the latest technology combined with experienced technical support, we help you successfully meet the demands of new market and product applications.

Plus, our unmatched standard for quality and color consistency ensure that you'll produce the highest graphic quality job after job. Call us today, we have the solution for your next opportunity.

Headquarters
1-800-426-4657
www.actega.com

125 Technology Dr.
Lincolnton, NC 28092 USA

Branches
Boston
Norcross
Cincinnati
Cinnaminson
Brampton
Kansas City
Dallas
Chicago
Fairfield



A member of **ALTANA**

2011 TLMI Label Awards



Tags—Merchandising **FIRST PLACE**

BIZERBA LABEL SOLUTIONS, INC.
Butterball Promotional Save \$1 Tag

Wine & Spirits—Flexography/Letterpress— Color Process—Prime **FIRST PLACE/BEST OF SHOW**

ASL PRINT FX
Red Tile Chardonnay

SECOND PLACE

LABELTRONIX
South Coast Winery Wild Hors Peak



SEARCHING FOR FULL AUTOMATION FROM AN ERP OR WMS SOLUTION?

Packaging companies running
EFI Radius achieve 9% or

**GREATER
PROFITABILITY**
at
TWICE THE RATE
of other packaging companies.

With EFI Radius, packaging companies achieve outstanding results – regularly outperforming their peers running other solutions.

The EFI Radius ERP solution offers packaging companies the comprehensive capabilities of a world class ERP system, while fitting the unique business processes of packaging operations: producing labels, flexible packaging, folding cartons and extruded materials. This solution's comprehensive capabilities are able to address the needs of packaging companies with complex operating environments such as multi-site, multi-currency, multi-language and multi-product production processes.

Learn more at www.efi.com/profit3 or call us at 1-800-875-7117.

©2011 EFI. All rights reserved.



Wine & Spirits— Flexography/ Letterpress— Color Process—Non-Prime **FIRST PLACE**

MCDOWELL LABEL &
SCREEN PRINTING
Viva Rosso



Wine & Spirits— Flexography/ Letterpress— Line/Prime **FIRST PLACE**

MCDOWELL LABEL &
SCREEN PRINTING
Tequila Reposado

**Wine & Spirits—
Flexography/Letterpress—
Line & Screen/Tone—Prime**

FIRST PLACE

G3 ENTERPRISES
Genesis Riesling 2010

SECOND PLACE

LABELTRONIX
South Coast Winery Blanc De Noir



**Wine & Spirits—Offset—
Color Process—Prime**

FIRST PLACE

COLLOTYPE LABELS
USA INC.
Wren Hop

SECOND PLACE

COLLOTYPE LABELS
USA INC.
Kenwood Artist Series



**Wine & Spirits—
Offset—Line/Prime**

FIRST PLACE

COLLOTYPE LABELS USA INC.
*Blackstone
Sonoma Reserve*

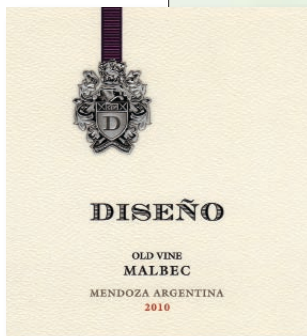
**Wine & Spirits—
Offset—Line &
Screen/Tone—Prime**

FIRST PLACE

YORK LABEL
*Diseño Old Vine
Malbec 2010*

SECOND PLACE

YORK LABEL
Artesa Tesoro 2007



AIR®

print media messe
drupa

world market print
media, publishing &
converting

your link to print

one world - one drupa
may 3 - 16, 2012
düsseldorf, germany
www.drupa.com

your link to more - Tune in and see the drupa highlights already now! Experience AR by scanning the drupa logo with your smartphone or webcam. Visit www.drupa.com/help to find out how it exactly works.

For show information:
Messe Düsseldorf
North America
130 South Fieldgate Avenue
Suite 2300
Chicago, IL 60604
Tel. (773) 763-8888
Fax (773) 763-8800
E-mail: info@ma-na.com
<http://www.ma-na.com>

For hotel and travel
arrangements:
MTR Travel, Inc.
Tel. (495) 874-3479
Fax (495) 874-3477

